

Attendance

Facts For Parents



**“Education is the most powerful weapon that you can use to change the world”
Nelson Mandela**

**Christ Church Charnock Richard
C of E Primary School**

CONTENTS

Every Day Counts	3
Did You Know?	4-5
Holidays	6-7
Policy & Procedure	8
Absences	9
How You Can Help	10
Punctuality	11
Contact Details	12

EVERY DAY COUNTS!

Page 3

At Christ Church Charnock Richard we know that good attendance is the key to successful schooling and we believe our pupils can be amongst the best.

Although we aim for 100% attendance, each year we set a target for attendance & this is used to compare us to other schools nationally. Our current **target is 96%** attendance.

Attending school every day will help give your child the best possible start in life.

Going to school every day means:

- learning new skills
- making friends
- having lots of fun
- building lasting relationships
- taking part in exciting activities

You can help us to help your child by encouraging regular school attendance.

Regular attendance helps children to develop their confidence and to make and keep **lasting friendships**.

Your child's education is very important; attendance habits established in the foundation years of education can affect their entire school life.



Page 4

Christ Church Charnock
Richard

DID YOU KNOW?

90% attendance is equivalent to missing 100 hour long lessons.

If you take your child on a **2 week holiday** in term time, attendance for the year **immediately drops to 95%**.

90% attendance means 1/2 a days absence each week; 4 weeks over the year & **half a years absence over 5 years!!**

90% attendance is equivalent to a full month off school in a year!

DID YOU KNOW?

Around 85 million days are lost to absence each year!

You can be **fin**ed up to **£2,500** or given **3 months prison sentence** if your child misses too much school.

Research shows that pupils who attend school regularly are more likely to **do well in the future.**

Poor attendance is sometimes due to a child being **unhappy at school**....Ask them about it!!

HOLIDAYS

PLEASE THINK CAREFULLY BEFORE TAKING YOUR CHILD OUT OF- SCHOOL DURING TERM TIME

In law you **must** ask for permission for your children to miss school.

Leave in term time **will only be agreed where the Headteacher feels there are exceptional circumstances.** Also, it is possible that leave **will not be agreed** when attendance already includes **unauthorised absence** and/or attendance is already causing concern.

You can request "leave in term time" for your child using a request form available at the School Office.

Parents who take a child of compulsory school age on holiday without permission from the school may be issued with a **penalty notice.**

TO HELP YOUR CHILD DO WELL IN SCHOOL, YOU SHOULD:

Arrange family holidays to coincide with school holidays

Never take your child out of school when there are important examinations or tests

Be aware of the potential impact on your child's education

Avoid taking your child out of school when they are just starting. This is very important as your child needs to settle into their new environment as quickly as possible.

HOLIDAYS

There are 190 statutory school days in one year. That means **there are 175 days** (weekends & school holidays) **available to use for holidays!**

There is **no** automatic entitlement in law to time off in school time to go on holiday.

Headteachers **cannot** authorise any leave in term time unless there are exceptional circumstances.

Any period taken without agreement of the school, or in excess of that agreed, will be classed as unauthorised and may attract a **Penalty Notice**.

A **2 week holiday** in school time means your child has approximately **50 hours of missed work** to catch up on !

POLICY & PROCEDURE

- Pupil attendance will be closely monitored. The Headteacher & School Bursar will check pupil attendance percentages regularly to see if action is required.
- First Response calls will be made daily if a child does not attend school.
- Ensuring your child's regular attendance at school is **your legal responsibility**.
- If attendance drops to 90% pupils are identified as 'Persistent Absentees'. A formal letter will be issued to parents/carers about their child's attendance record.
- A pupil becomes a '**persistent absentee**' when they miss **10% or more** schooling across the school year **for whatever reason**.
- Attendance Officers can use sanctions such as **Penalty Notices or prosecutions** in the Magistrates Court.
- Taking leave in term time will affect your child's schooling as much as any other absence and we expect parents to help us by not to take children away in school time.

**We expect
regular
attendance**



Every half-day absence from school has to be classified by the school as either **AUTHORISED** or **UNAUTHORISED**. This is why information about the cause of any absence is always required.

Authorised absences are mornings or afternoons away from school for a good reason like illness, medical/dental appointments which unavoidably fall in school time, emergencies or other unavoidable cause.

Unauthorised absences are those which the school does not consider reasonable and for which no 'leave' has been given. This type of absence can lead to the Authority using sanctions and/or legal proceedings.

**The best
attendees
achieve the
best grades**



HOW YOU CAN HELP

- Aim for 10 hours sleep a night for your child. This will make the following day at school easier for them to cope with.
- Make sure your child eats breakfast, it helps them stay alert at school.
- Help your child develop routines.
- Get their school bag ready the night before.
- Develop a night time routine that involves checking their homework, reading & bed.
- Try & make sure that any medical/dental appointments are made for after school.
- Never take holidays in term time.
- If you know your child will be absent from school, write a note before the day of absence.
- If your child is ill, ring the school as soon as possible on the first day of absence.

PUNCTUALITY

Poor punctuality or leaving before the end of the school day is **not acceptable**.

School data shows a **link between poor attendance & under-achievement**

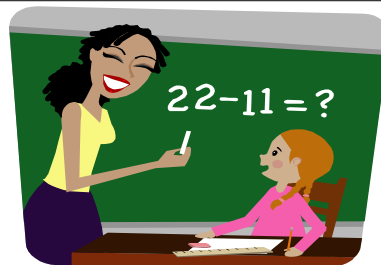


Missing just **10 mins of school a day** is the same as missing **two weeks over the year**.

Pupils who arrive late and/or leave early also **disrupt lessons**, which can be embarrassing for the child and can in turn, encourage absence. It is also extremely **disruptive for the rest of their class**.

School starts at **8.55am**
& ends at **3.25pm**.

Doors open at **8.45 am**.



Christ Church Charnock Richard
Church of England
Primary School

Tel: 01257 791490

Email: bursar@charnockrichard.lancs.sch.uk

For further help or advice please contact:

Mrs H Brooks
Head Teacher

As a school we place a very high priority on good attendance.